

# CUSTOM BUILT RANGE OF PRINTED CIRCUIT BOARD MOUNTING TRANSFORMERS AND CUSTOM BUILT RANGE OF CHASSIS MOUNTED TRANSFORMERS

Custom built range of PCB mounting transformers.

Ratings from 1VA to over 40VA 1ph.

Open and fully encapsulated types.

A comprehensive range of custom built printed circuit board mounting transformers. All are designed and manufactured to customers own requirements using top grade materials and employing the most advanced production technology. Power ratings start at less than 1VA and go up to over 40VA. Standards include EN 60742 and EN 61558. Fully encapsulated units are also available.

Description and type	PCB pitch	VA ratings
Open type PCB mounted (Imperial)	Using 5.08mm & 7.62mm grid pitch	From 1VA to 30VA
Open type PCB mounted (Metric)	Using 5.00mm grid pitch	From 1VA to 40VA
Fully encapsulated conventional PCB mounted (Metric)	Using 5.00mm grid pitch	From 0.35VA to 43.5VA
Fully encapsulated low profile PCB mounted (Metric)	Using 5.00mm grid pitch	From 3VA to 30VA

Custom built range of chassis mounted transformers.

Ratings from 6VA to 90VA with 2 fixing wrap-over clamp.

Ratings from 25VA to 300VA with universal frames or base clamps.

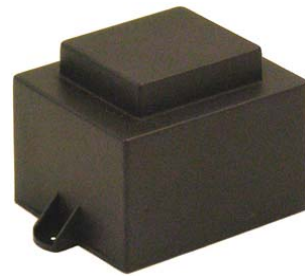
Open types with solder tag or amp tag connections.

Encapsulated type from 28VA to 120VA with solder tags.

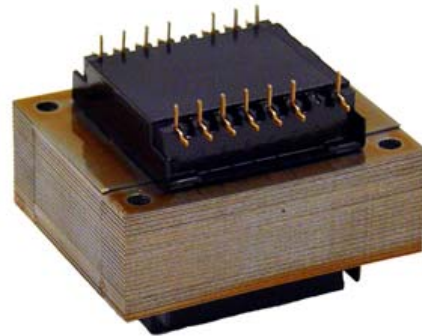
A comprehensive range of custom built chassis mounting transformers. All are designed and manufactured to customers own requirements using top grade materials and employing the most advanced manufacturing technology. Ratings start at 6VA and go up to 300VA. Standards include EN 60742 and EN 61558.

Description and type	Fixing type	VA ratings
Open type with solder tags	Using two fixing wrap over clamping brackets	From 6VA to 90VA
Open type with solder tags	Using four fixing universal frames or base clamps	From 25VA to 300VA
Open type with amp tags	Using four fixing universal frames or base clamps	From 25VA to 300VA
Encapsulated type	Using multi fixing moulded cases	From 28VA to 120VA

Images are not to scale



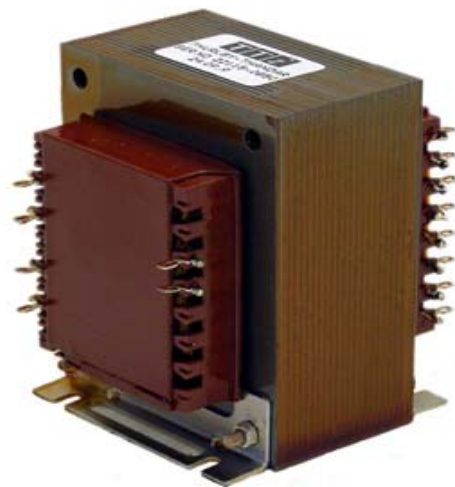
Encapsulated PCB mounted



PCB mounted open type



Chassis mounted with wrap over clamp



Chassis mounted with base clamps

